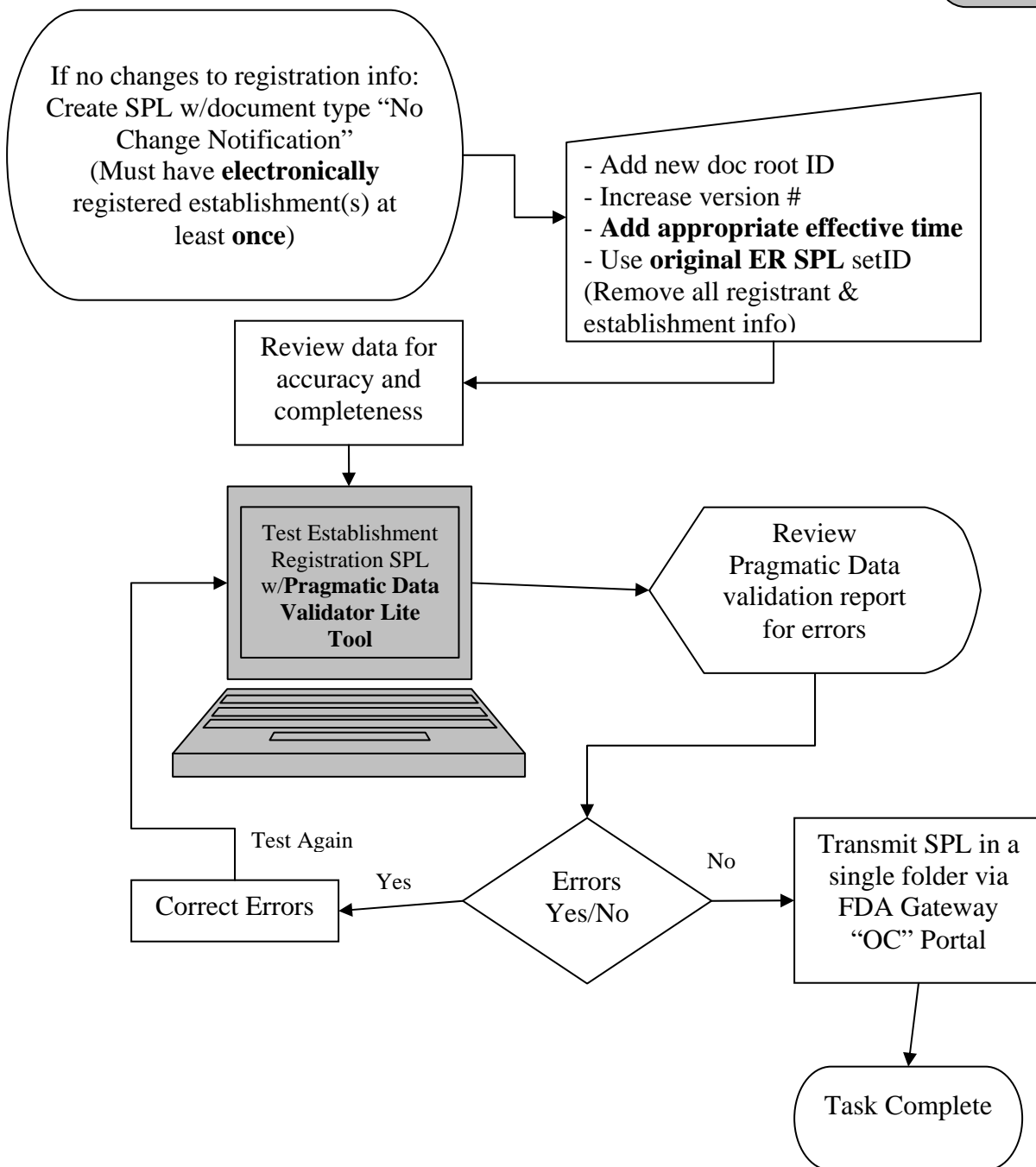


Reporting No Changes to Drug Establishment Info



eCard Legend			
	Start/Stop Point		Decision Point
	Link to Internet (Click the link)		Data Entry
	Action/Process		Review Data/Steps

This is one in a series of SPL R4 training "eCards" designed to assist companies to submit valid and compliant SPL R4 documents via the FDA's Electronic Submission Gateway.